



**ATEX  
approved,  
portable  
gravity flow  
meter for  
petroleum  
products**

## Portable gravity flow meter for petroleum products

**FlexiCompt+ is a portable and compact MID certified metering system which enables precise measuring of multiple products.**

With the help of the advanced technology of an Adriane turbine, the volume delivered can be quickly and easily checked. It makes split deliveries possible as well as enabling transparent returned product quantification for all types of fuel.

Most importantly, FlexiCompt+ shows any discrepancies between the actual amount loaded (bill of lading) and the amount delivered/invoiced. Providing a total audit of product through each delivery.

FlexiCompt+ comes with an infra-red data transfer system, with printer kit and protective carry case as an option.

### Main features:

- Gravity metering solution for all petroleum products
- Fuel oil tankers and rail car product reception control
- Reduce the risk of fraud and full ticket printout available
- Partial or full compartment deliveries
- MID approved

## Portable and compact MID certified metering system

### Flexicompt+

Metered liquids:	All refined petroleum products (Heating oil, diesel, fuel, jet, red diesel, ethanol etc.)
Flow rate:	8 to 80 m <sup>3</sup> /h 133 to 1330 l/min
Accuracy class:	0,5
Accuracy:	+/- 0,1%*
Repeatability:	+/- 0,02%
Scale interval:	1L
Min. pressure:	Atmospheric pressure
Max. pressure:	5 bars
Temperature:	-20°C to +50°C
Pressure drop:	0,05 bar to 40 m <sup>3</sup> /h
Weight:	6 kg
Detection:	2 gas detectors 1 temperature probe
Certificate:	CET LNE-25756 (MID)

### Turbine

Body:	Aluminum 242
Size:	3" DN80 100x100mm
Atex:	II 2 G c IIC T6
Viscosity:	13 mm <sup>2</sup> /s max.

### Calculator

LCD screen:	Easy reading and simple navigation menu Alarm messages integrated Units L, m <sup>3</sup> /h, L/min, °C French or English language
Power supply:	2 lithium batteries (lifetime: 2 years)
Atex:	II 1 G Ex ia IIB T4 Ga
Memory:	1 year with 99 messages/day

### Options

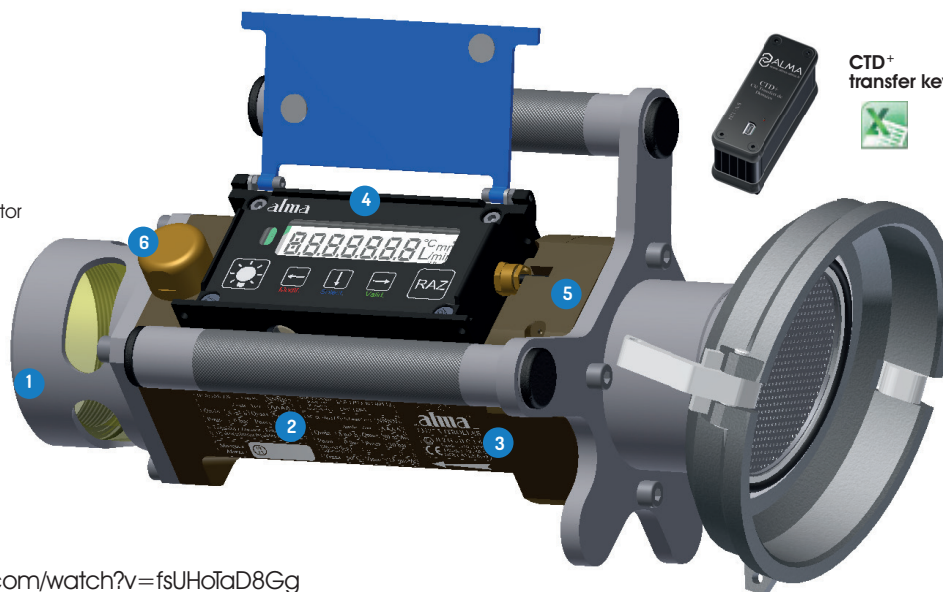
CTD+ key:	Data transfer of operations log and parameters to a computer or smartphone (Excel format)
Temperature conversion:	15°C or 20°C

### Accessories

Inlet/outlet connections:	4" API 3" 1/2 symmetric Camlock Other on request
---------------------------	---

\* Depending on the conditions of use

- 1 Sight glass
- 2 Temperature probe
- 3 ADRIANE turbine
- 4 UNI indicator calculator
- 5 Gas detectors
- 6 Vacuum breaker



**YouTube**

<https://www.youtube.com/watch?v=fsUHoTd8Gg>