

MechTronic

Parts Catalogue



About MechTronic

At MechTronic we provide metering and gauging systems for the road tanker market. This booklet highlights some of our more popular spares including API's, valves, sensors, seals, O-rings, gaskets, flanges, vapour recovery adaptors and visual indicators.

We stock over 3,000 road tanker spares and components in our warehouse, should you not find the part you require within this booklet please do contact us and we can help locate the part you need.

To place an order or to discuss your requirements please contact MechTronic on 0113 279 9661 or email sales@mechtronic.ltd.uk



Terms and conditions:

Products and codes are correct at the time of print October 2020. Please note that minimum order values apply, please contact us for details.

Orders placed before 4pm are available for next day delivery – Monday to Friday and UK mainland addresses only. Delivery to the Scottish Highlands is a two-day service.

Index

1. API components	P1
2. Valves, footvalves, RCO, interlocks and knobs	P2 - 4
3. O-rings, seals and gaskets	P5 - 6
4. Doors, handles and windows	P6
5. VisiWink	P6
6. VRA's	P7
7. HLCO	P8
8. Pumps and meters	P9
9. Remotes and covers	P9 - P11
10. Manlid components	P12
11. Manifold components	P13 - P14
12. MaxFlow components	P15 - P16
13. AddFlow systems	P16
14. AntiMove systems	P16
15. Printers	P17
16. PGI's	P17
17. Fittings	P17

API valve - with sight glass

Part No.	Description
API-1026	API valve



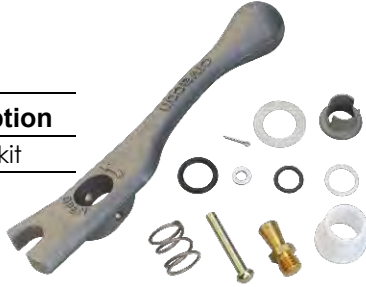
API sight glass assembly

Part No.	Description
SIGHTGLASSKIT-03044	Sight glass



API valve handle kit

Part No.	Description
HANDLE-01271	Handle kit



API dust cap

Part No.	Description
CAP-02900	Dust cap



Strap for product return cap / API dust cap

Part No.	Description
STRAP-02040	Strap



Viton API dust cap seal

Part No.	Description
SEAL-02078	Seal



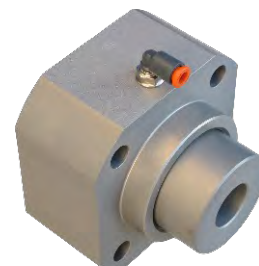
1 1/2" axial valve for hose/bulk open/close valve c/w flanges

Part No.	Description
VALVE-0610	Valve



Pneumatic relief valve for Blackmer TXH3 pump with gasket

Part No.	Description
VALVE-02268	Valve



4" foot valve standard (non-pressure balanced)

Part No.	Description
FOOTVALVE-04391	Dixon valve



4" foot valve intermediate (non-pressure balanced)

Part No.	Description
FOOTVALVE-1024	OPW valve



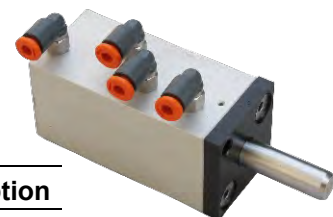
Bottom loading guard bar lock

Part No.	Description
LOCK-1000	Guard bar lock



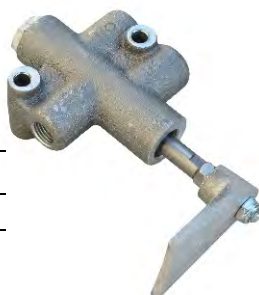
Bottom socket pneumatic interlock

Part No.	Description
INTERLOCK-02572	Interlock



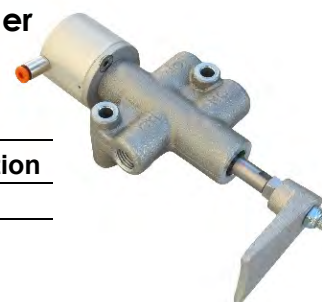
Pneumatic interlock valve for vapour recovery valve

Part No.	Description
VALVE-01332	Interlock



Interlock valve complete with pneumatic cylinder

Part No.	Description
INTERLOCK-03554	Interlock



6mm inline AND logic

Part No.	Description
VALVE-01273	Valve



6mm inline OR logic

Part No.	Description
VALVE-01218	Valve



Blow down valve for product return spout

Part No.	Description
VALVE-01339	Valve



NOT logic element (white)

Part No.	Description
LOGIC-02255	Logic



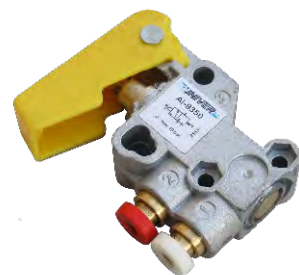
Multi-shuttle pneumatic valve

Part No.	Description
VALVE-01318	Valve



Limit switch for todo valve

Part No.	Description
VALVE-01526	Switch



6mm inline QEV (quick exhaust valve)

Part No.	Description
VALVE-01504	Valve



Emergency stop valve complete assembly

Part No.	Description
RCO-1066	Valve



Valve pilot spring

Part No.	Description
VALVE-01964	Valve



Emergency stop valve

Part No.	Description
VALVE-01458	Valve



Pneumatic valve for MaxFlow control box

Part No.	Description
VALVE-01614	Valve



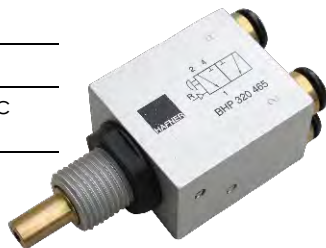
Footvalve knock-off valve

Part No.	Description
VALVE-01372	Valve specific to MaxFlow



Master/guard bar valve

Part No.	Description
VALVE-04256	Valve specific to OptiMate

**Foot valve control valve with knob**

Part No.	Description
VALVE-04250	Valve specific to OptiMate

**Foot valve control button**

Part No.	Description
KNOB-02473	Button specific to MaxFlow

**Blow down valve button**

Part No.	Description
KNOB-02474	Button

**Emergency stop valve button**

Part No.	Description
KNOB-02475	Button

**Black control cabinet knob**

Part No.	Description
KNOB-01692	Knob

**Yellow control cabinet knob**

Part No.	Description
KNOB-01275	Knob

**Green control cabinet knob**

Part No.	Description
KNOB-01691	Knob

**Blue control cabinet knob**

Part No.	Description
KNOB-01690	Knob

**Foot valve knob**

Part No.	Description
KNOB-04601	Knob specific to OptiMate



10" manlid seal

Part No.	Description
SEAL-02862	Seal



Viton API dust cap seal

Part No.	Description
SEAL-02078	Seal



O-ring for connector stems

Part No.	Description
ORING-02966	O-ring



Mechanical seal for Blackmer TXH3 pump

Part No.	Description
SEAL-02223	Seal



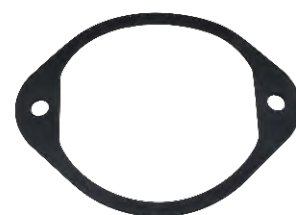
Gasket for gas separator filter lid

Part No.	Description
GASKET-01970	Gasket



Gasket for socket facia

Part No.	Description
GASKET-02358	Gasket



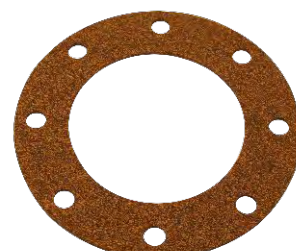
Foot valve sump gasket

Part No.	Description
GASKET-01836	Gasket



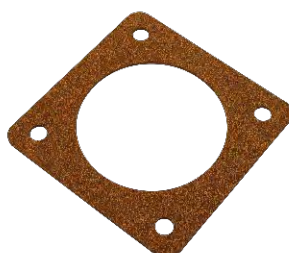
8 hole TTMA API/manifold gasket

Part No.	Description
GASKET-01172	Gasket



4 hole square foot valve gasket

Part No.	Description
GASKET-01215	Gasket



Relief valve gasket

Part No.	Description
GASKET-02426	Gasket



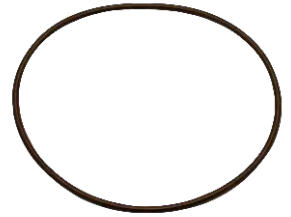
Product transfer adaptor flange

Part No.	Description
FLANGE-01100	Flange



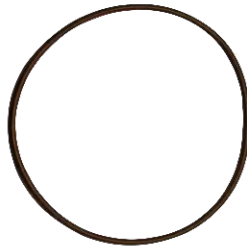
O-ring for VisiFlow connector pipe

Part No.	Description
ORING-01626	O-ring specific to MaxFlow



O-ring for manifold poppet valve

Part No.	Description
ORING-01043	O-ring



Doors, handles and windows

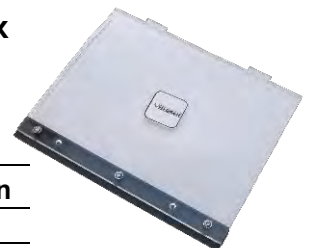
Control cabinet door for MaxFlow control box

Part No.	Description
DOORASSY-03142	Door



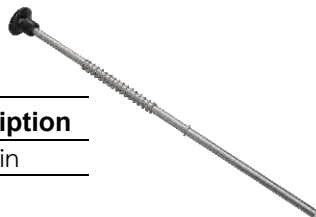
Mechanical sliding interlock door for MaxFlow control box

Part No.	Description
DOORASSY-02243	Door



Lock pin assembly for MaxFlow control box door

Part No.	Description
LOCKPINASSY-03549	Lock Pin



VisiWink

Pneumatic visual indicator

Part No.	Description
VISIWINK-01180	Viswink



Vapour recovery valve

Part No.	Description
VRA-1022	Valve



Vapour recovery valve complete with pneumatic cylinder interlock

Part No.	Description
VRA-02604	Valve



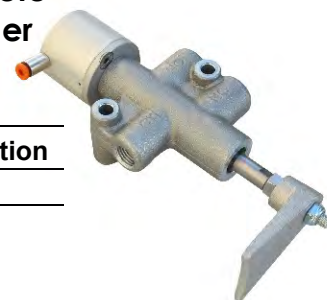
Pneumatic interlock valve for vapour recovery valve

Part No.	Description
VALVE-01332	Valve



Interlock valve complete with pneumatic cylinder

Part No.	Description
INTERLOCK-03554	Valve



Cap for vapour recovery valve

Part No.	Description
CAP-1023	Cap



Top socket assembly

Part No.	Description
SOCKET-1215	Socket



Bottom socket assembly

Part No.	Description
SOCKET-1214	Socket



Socket facia for top and bottom socket, complete with cap and gasket

Part No.	Description
SOCKET-01597	Socket assy



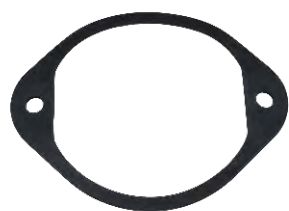
Cap for socket facia

Part No.	Description
CAP-01419	Cap



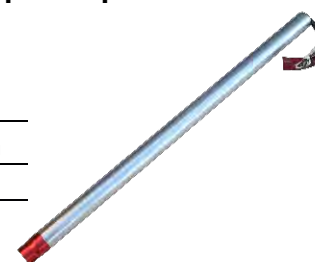
Gasket for socket facia

Part No.	Description
GASKET-02358	Gasket



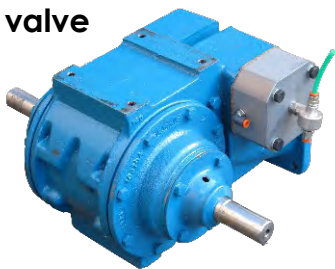
18" high level cut off optical probe

Part No.	Description
SENSOR-1029	Probe



Blackmer TXH3 pump, complete with pneumatic relief valve

Part No.	Description
PUMP-1181	Pump



Blackmer TXDI 2" pump, complete with pneumatic relief valve

Part No.	Description
PUMP-04543	Pump



Bearing for Blackmer TXH3 pump

Part No.	Description
BEARING-02226	Bearing



Pulsar for FPP meter

Part No.	Description
SENSOR-01687	Pulsar



Remotes and covers

Pro Control 1 (white standard remote)

Part No.	Description
TRANSMITTER-03138	White remote for MaxFlow



Pro Control 1 (white standard remote)

Part No.	Description
TRANSMITTER-04369	White remote for OptiMate



Cover for Pro Control 1 (white standard remote)

Part No.	Description
COVER-02688	Cover only



Antenna for Pro Control 1 (white standard remote)

Part No.	Description
ANTENNA-02608	Antenna



Receiver for Pro Control 1 (white standard remote)

Part No.	Description
A range of tailored specifications are available, please contact us to discuss your requirements.	
	Receiver



Pro Control 2 remote

Part No.	Description
----------	-------------

A range of tailored specifications are available, please contact us to discuss your requirements.



Cover for Pro Control 2 remote

Part No.	Description
----------	-------------

COVER-02690	Pro Control 2 remote cover
-------------	----------------------------



Receiver for Pro Control 2 remote

Part No.	Description
----------	-------------

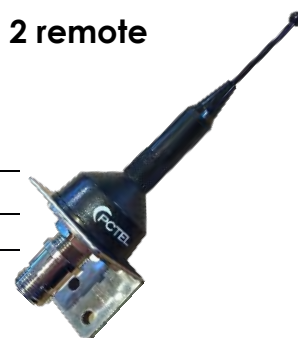
A range of tailored specifications are available, please contact us to discuss your requirements.



Antenna for Pro Control 2 remote

Part No.	Description
----------	-------------

ANTENNA-02840	Antenna
---------------	---------



Battery for Pro Control 2 remote

Part No.	Description
----------	-------------

BATTERY-03155	Battery
---------------	---------



Charging lead for Pro Control 2 remote

Part No.	Description
----------	-------------

LEAD-02697	Lead
------------	------



Pro Control 3 remote

Part No.	Description
----------	-------------

A range of tailored specifications are available, please contact us to discuss your requirements.



Cover for Pro Control 3 remote

Part No.	Description
----------	-------------

COVER-04451	Cover for the Pro Control 3
-------------	-----------------------------



Receiver for Pro Control 3 remote

Part No.	Description
----------	-------------

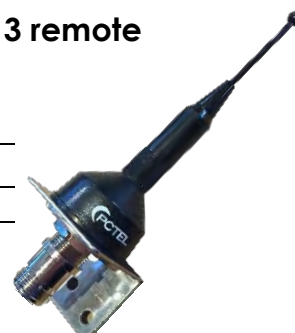
A range of tailored specifications are available, please contact us to discuss your requirements.



Antenna for Pro Control 3 remote

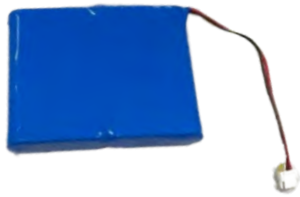
Part No.	Description
----------	-------------

ANTENNA-02840	Antenna
---------------	---------



Battery for Pro Control 3 remote

Part No.	Description
BATTERY-04695	Battery



Holder for Pro Control 3

Part No.	Description
HOLDER-04605	Holder only



Communication cable for Pro Control 2/3 antenna

Part No.	Description
CABLE-02841	Lead



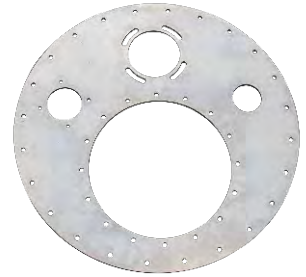
10" manlid complete with baseplate

Part No.	Description
MANLID-01933	Manlid



Base plate for 10" manlid

Part No.	Description
PLATE-01833	Plate



10" manlid

Part No.	Description
FILLID-02076	Manlid



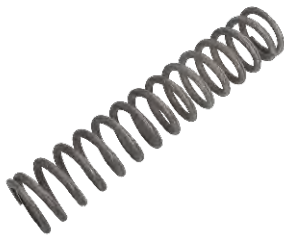
Manlid key

Part No.	Description
KEY-02241	Key



Manlid spring

Part No.	Description
SPRING-03707	Spring



Dip tube cap assembly

Part No.	Description
CAPASSY-02051	Dip tube cap only



Vent valve for vapour transfer valve

Part No.	Description
VENTVALVE-1020	Valve



PV vent valve

Part No.	Description
VENTVALVE-04692	Valve



PV vent valve

Part No.	Description
VENTVALVE-04414	Valve



Vapour recovery hose

Part No.	Description
HOSE-03932	Hose



Manifold poppet assembly



Part No.	Description
POPPEVALVE-02938	Poppet

Manifold poppet valve for Civacon manifold



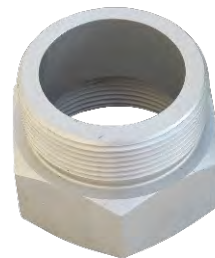
Part No.	Description
POPPE-02003	Poppet

Cap assembly for manifold valve



Part No.	Description
CAPASSY-03538	Cap

Adaptor for product return spout 2" BSP male - female alloy



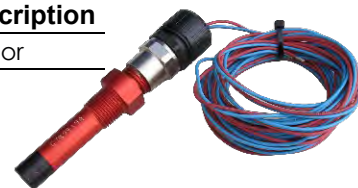
Part No.	Description
ADAPTOR-01733	Adaptor

Cap for product return spout



Part No.	Description
CAPASSY-03539	Cap

MaxFlow sensor with 5m wire



Part No.	Description
SENSORASSY-03574	Sensor

Guard bar arm assembly



Part No.	Description
ARM-03183	Arm assembly

Handle for blow down valve for product return spout



Part No.	Description
HANDLE-03260	Handle

Stud for VisiFlow gas separator filter housing



Part No.	Description
STUD-02429	Stud

Guard bar magnet



Part No.	Description
MAGNET-01216	Magnet

Electronic product return interlock

Part No.	Description
SWITCH-01640	Interlock



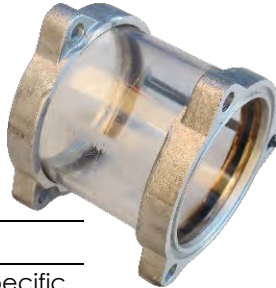
VisiFlow manifold connector pipe

Part No.	Description
PIPE-1013	Pipe



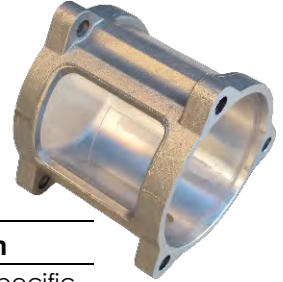
Service repair sight glass for VisiFlow manifold

Part No.	Description
SIGHTGLASS-03831	Sight glass specific to MaxFlow



Sight glass for VisiFlow manifold

Part No.	Description
SIGHTGLASS-03192	Sight glass specific to MaxFlow



PF80 filter element

Part No.	Description
FILTER-02225	Filter



PF80 filter cover

Part No.	Description
COVER-03465	Cover



Filter lid for gas separator

Part No.	Description
LID-01969	Lid



Gasket for gas separator filter lid

Part No.	Description
GASKET-01970	Gasket



EMR4 display module

Part No.	Description
DISPLAYMODULE-04544	Module



Flow switch PCB for MaxFlow control box

Part No.	Description
PCB-02918	PCB



Monitor PCB for MaxFlow control box

Part No.	Description
MONITOR-01797	PCB



Battery for EMR3 IB board

Part No.	Description
BATTERY-02844	Battery



24vdc solenoid valve

Part No.	Description
VALVE-02253	Solenoid



3/2 NC 24vdc solenoid valve (81-519-732)

Part No.	Description
VALVE-02249	Solenoid



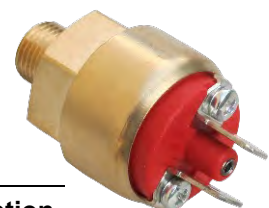
Meter stop/start switch for MaxFlow control box

Part No.	Description
SWITCH-01584	Switch



1/8 BSP pressure switch

Part No.	Description
PRESSURESWITCH-03525	Switch



3/2 NO pilot/spring (81-513-600)

Part No.	Description
VALVE-02252	Valve



4/2 pilot spring (81-513-200)

Part No.	Description
VALVE-02251	Valve



NC pilot spring (81-513-100)

Part No.	Description
VALVE-02250	Valve



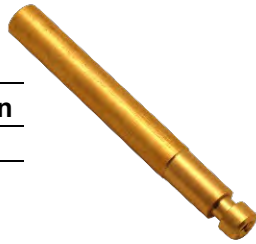
EMR4 interconnection box

Part No.	Description
INTBOX-04545	EMR4 IB



Connector for pneumatic control valve

Part No.	Description
CONNECTOR-01306	Connector



AddFlow systems

Single additive tank for AddFlow

Part No.	Description
ADDFLOW-04376	Complete AddFlow



AntiMove systems

AntiMove (anti-rollaway and anti-theft device)

Part No.	Description
ANTIMOVE-01935	Complete AntiMove



Printers

Epson slip printer

Part No.	Description
PRINTER-01482	Printer



Printer cable for Epson slip printer

Part No.	Description
CABLE-01483	Cable



PGI's

Standard product grade indicator

Part No.	Description
PGI-1077	PGI



Electronic product grade indicator

Part No.	Description
PGIELECT-1076	PGI



Fittings

6mm 1/8 BSP fitting

Part No.	Description
PUSHIN-01031	Fitting

