

# MT20/30/40

## MechTronic is a distributor of **Pollard Pumps**

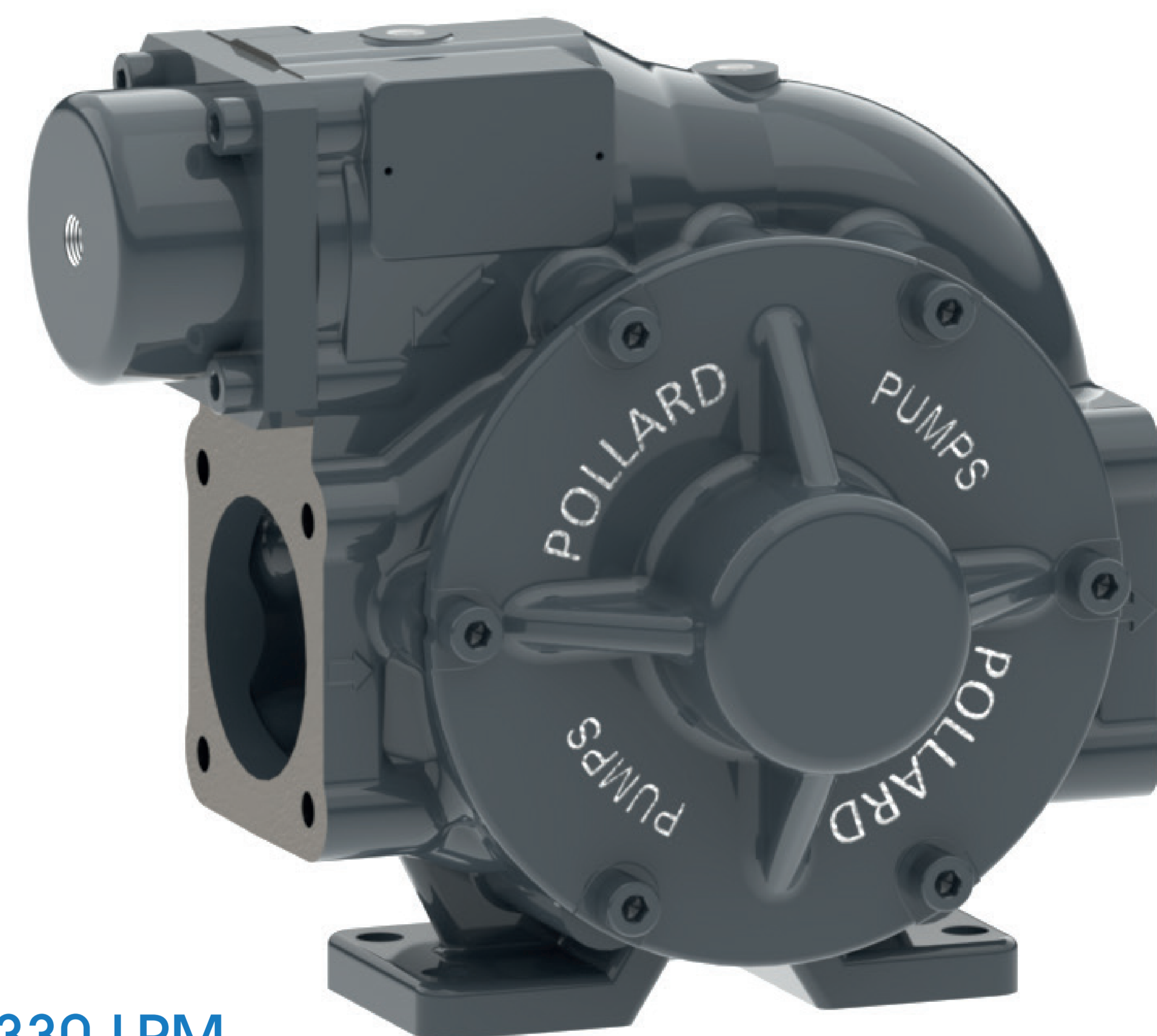
MechTronic is excited to announce that we have become a distributor for Pollard Pumps. These innovative sliding vane pumps are available in three different flow rates and provide real benefits to the UK market. The pumps are specifically designed for the transfer, loading, and unloading of various petroleum-based products and biofuels.

Over the past year, MechTronic has conducted extensive trials of these pumps on tankers in the United Kingdom. The results have shown exceptional reliability, with the pumps providing a constant flow of fluid without the need for greasing, saving valuable time and resources. Overall, these pumps have proven to be a highly effective solution for fluid transfer on tankers, offering a reliable and efficient option for businesses in the UK.

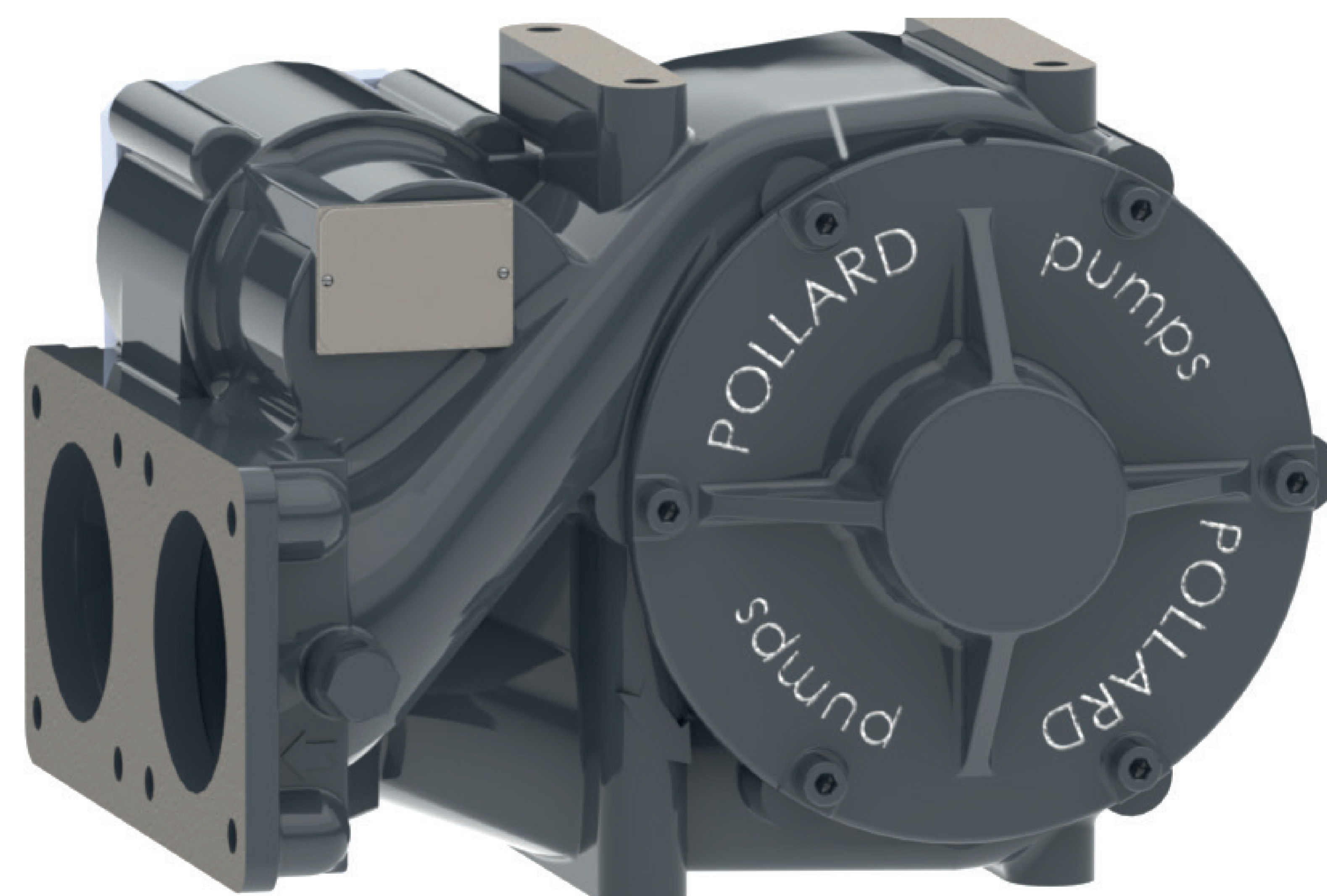
### Main features:

- Low maintenance, no requirement to grease the pump.
- Single mechanical seal.
- Industry leading flow rates and quiet performance.
- Pneumatic or mechanical bypass.
- Robust construction for working in severe conditions.
- Fully ATEX-approved and designed to European standards.

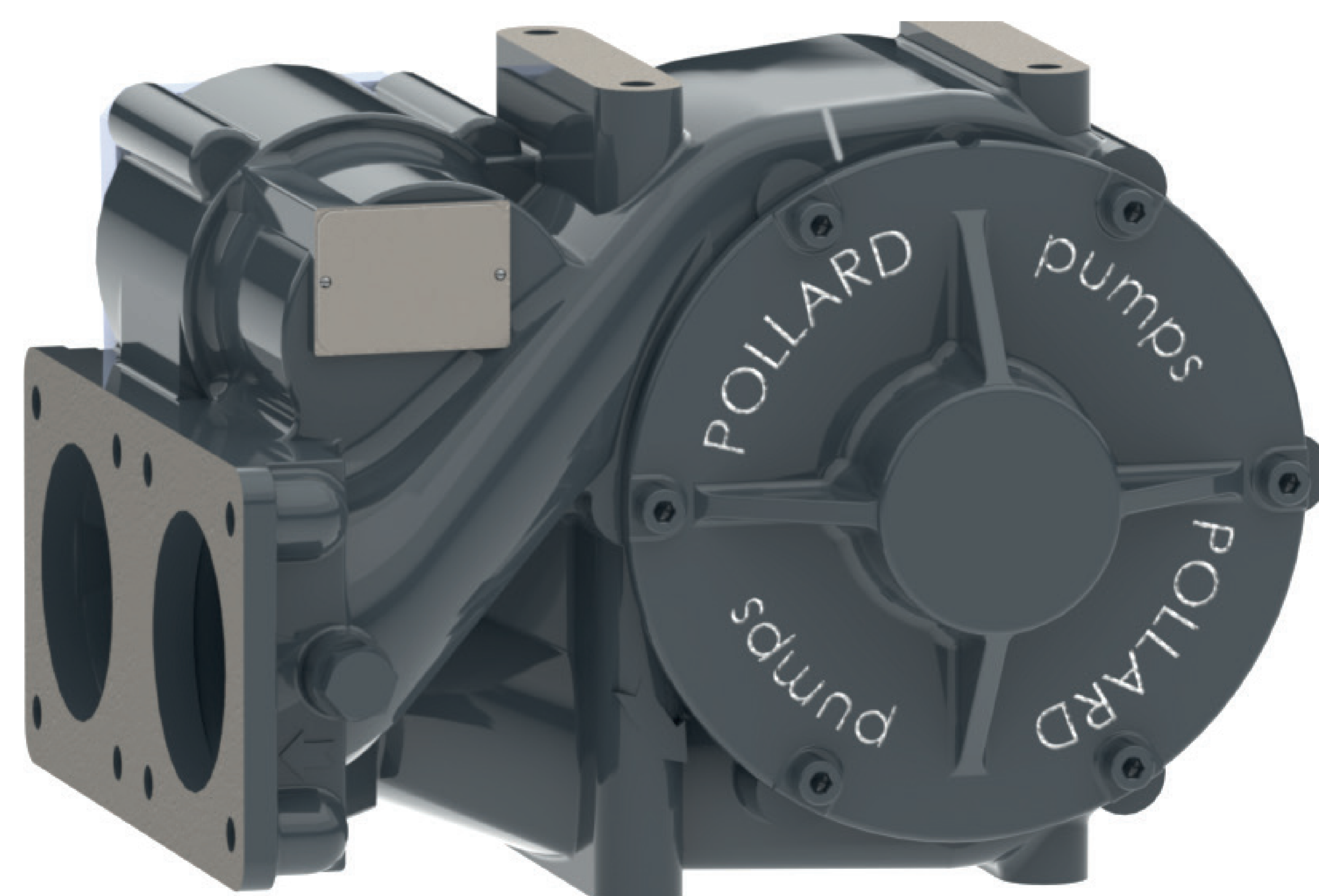
# Pollard PUMPS



MT20 - Delivers 330 LPM



MT30 - Delivers 900 LPM



MT40 - Delivers 1300 LPM



For further information about this or any of our other outstanding products please call 0113 279 9661 or visit [www.mechtronic.ltd.uk](http://www.mechtronic.ltd.uk)



EST. 2004

MechTronic Limited  
15 Lower Wortley Road  
Wortley, Leeds LS12 4RY

T: 0113 279 9661  
E: [admin@mechtronic.ltd.uk](mailto:admin@mechtronic.ltd.uk)  
w: [www.mechtronic.ltd.uk](http://www.mechtronic.ltd.uk)